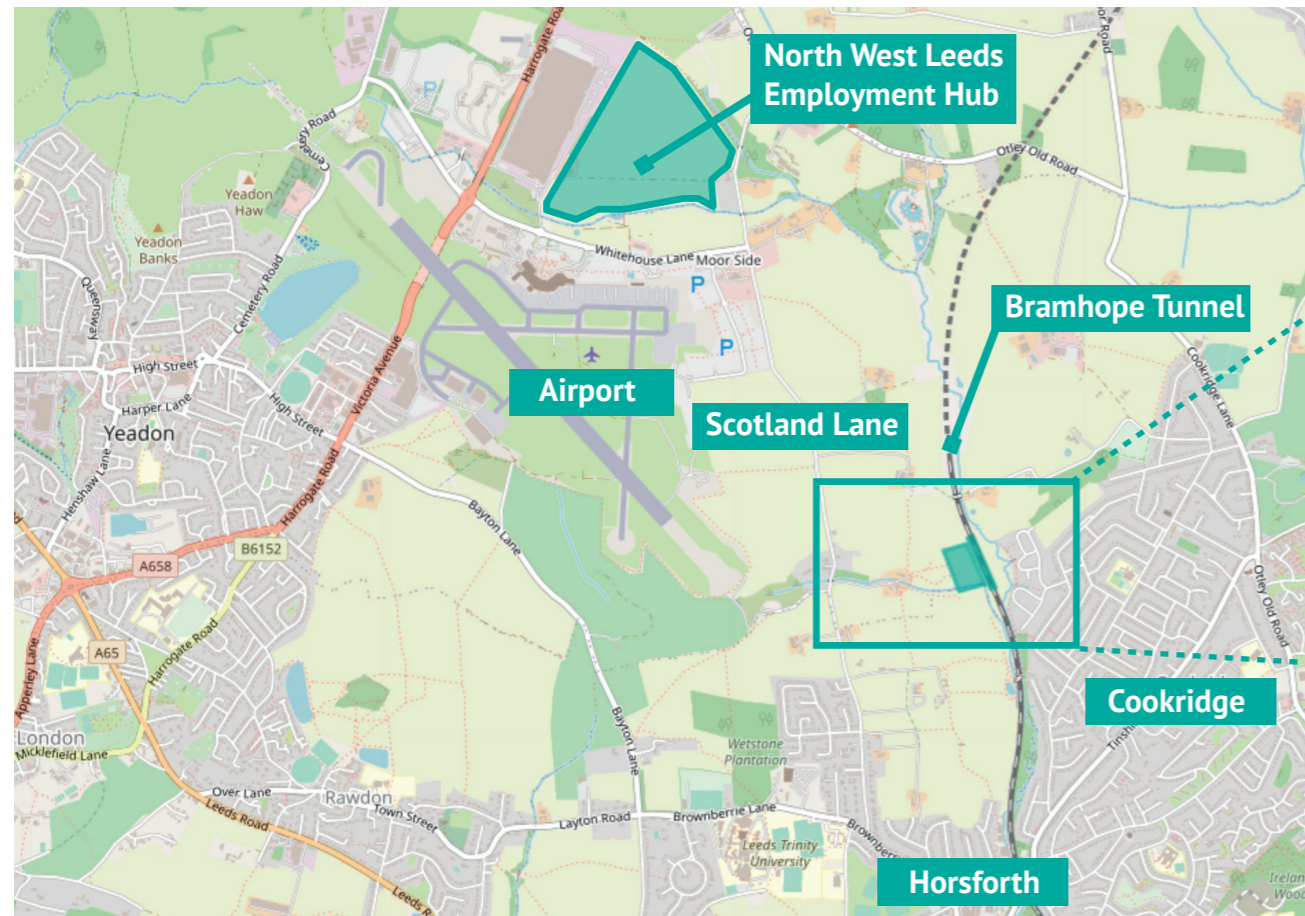


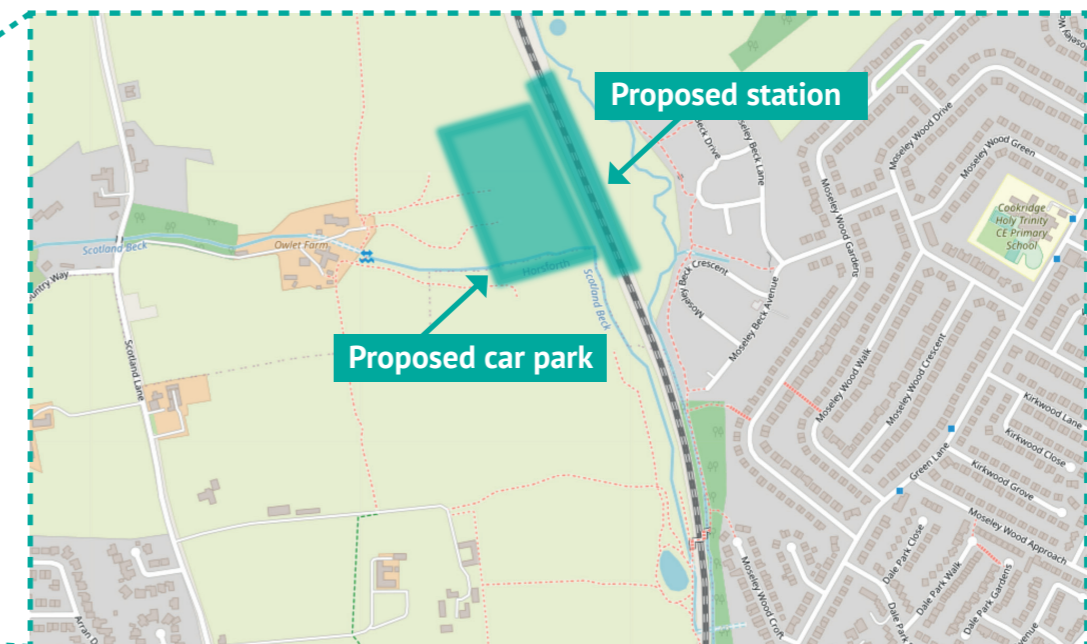
1. Location of the Rail Station



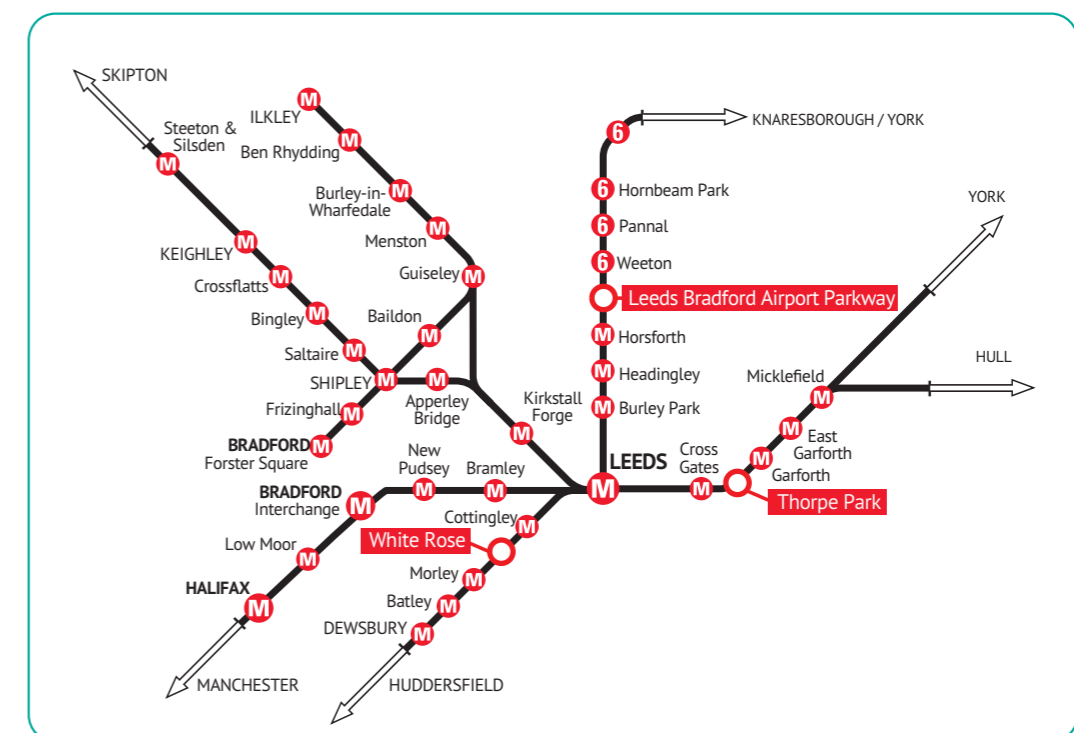
© OpenStreetMap contributors

The West Yorkshire Combined Authority is currently developing plans to build a new rail station on the existing Harrogate line, between Horsforth Station and the southern end of the Bramhope tunnel.

The station will provide an interchange to serve Leeds Bradford Airport and a park and ride to serve a large, but generally rural, catchment area between North Leeds and Harrogate.



© OpenStreetMap contributors



Location of Parkway Station on network map

2. Artist's Impression of the Station

The current design proposals include:

- A station building with waiting area, convenience retail offerings, ticket purchasing facilities and accessible toilets
- Two 125m platforms positioned in the existing cutting
- A 350-space park and ride car park where mechanisms will be considered to prohibit airport users parking for free
- A bus interchange to provide connections to airport

Aerial view



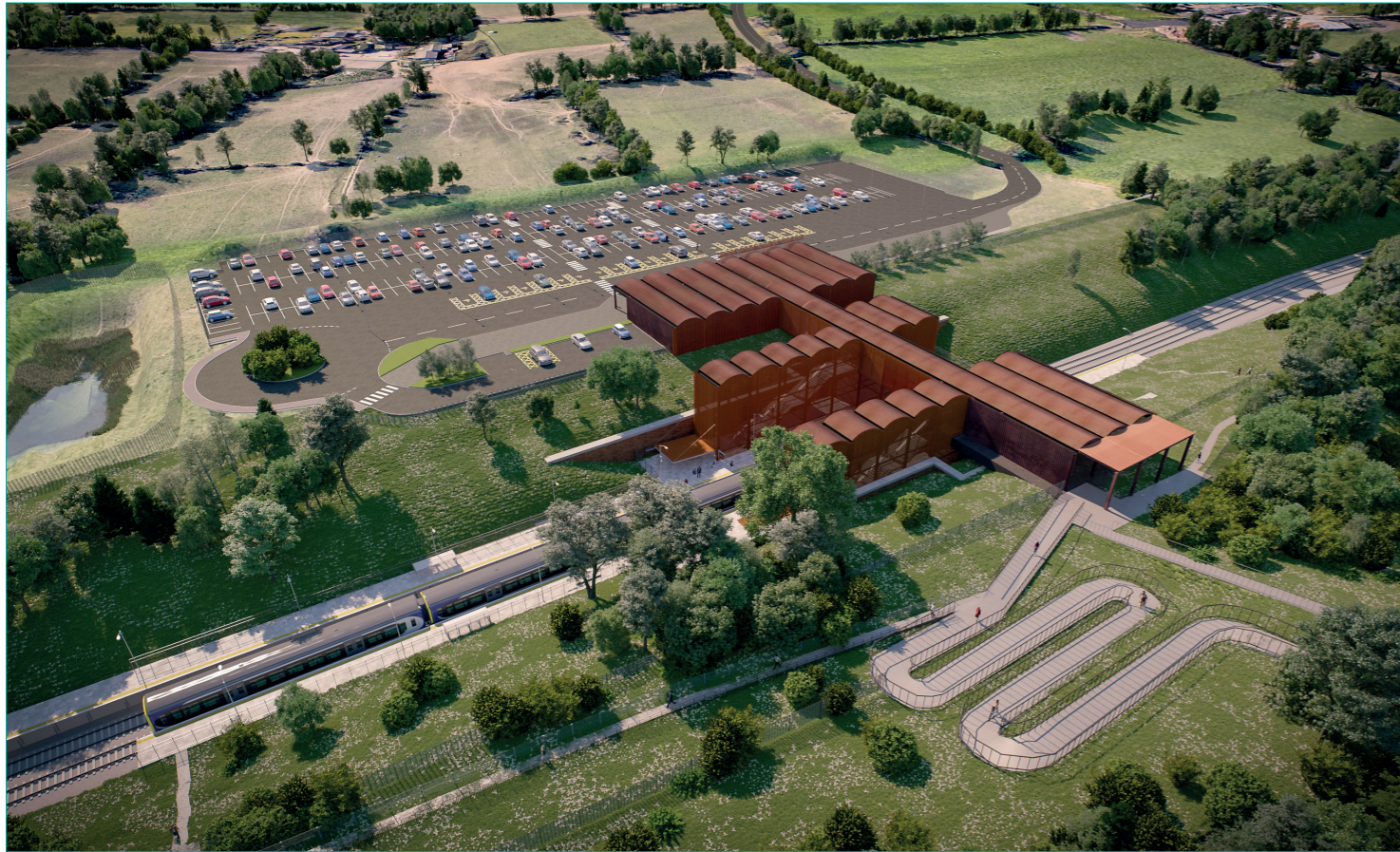
LBA Parkway Station will be an accessible station, with facilities including:

- Creating access by lift and stairs to both platforms
- Provision of Blue Badge holder parking bays and designated pick up/drop off facilities
- Regular shuttle bus service from station to airport terminal
- Provision of cycle storage
- Provision of accessible pathways with a 2m width and slip resistant

Station view



3. Artist's Impression of the Station



Alternative Station View from Cookridge side



Platform View

A new access road will link the station car park to part of the existing highway network at Scotland Lane.

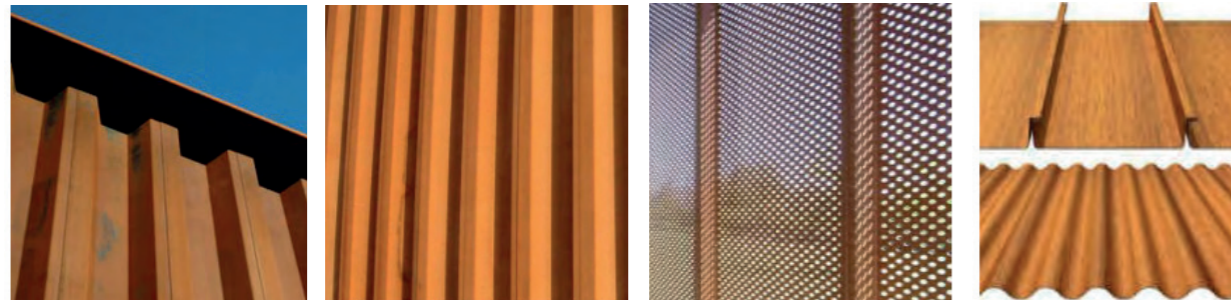
Designs options are still being considered for the junction between the new access road and Scotland Lane.

The Combined Authority is also working with Leeds City Council to develop a wider connectivity scheme for the area to improve access and connectivity to Leeds Bradford Airport, the North West Leeds Employment Hub and the Parkway Station.

Leeds City Council is currently considering options for the provision of public transport and active travel (walking/cycling) access, and this includes changes to the highway infrastructure (roads) that may be required. There will be a further phase of consultation regarding these proposals anticipated to take place in Summer 2021.

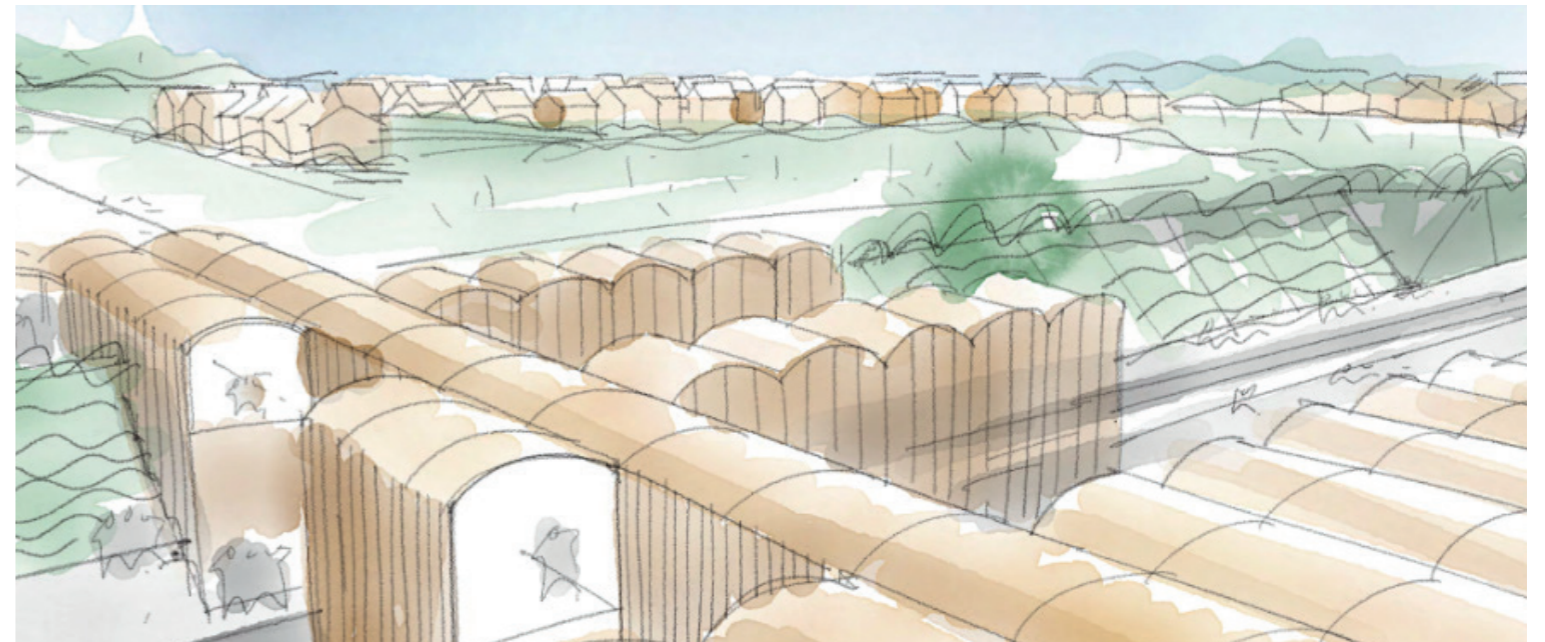
4. Building form and materials

The station's external materials have been considered based on rural buildings, housing developments and listed structures within the local area, as well as requirements of station engineering.



Key themes were identified:

- Arched structures as seen on original features of Moseley Beck landscape
- Pitched and vaulted roof forms as seen on traditional English rural buildings
- Clay bricks and warm textures as seen on original materials of the Moseley Wood Gardens
- Framed structures and vaulted roofscapes as seen on Victorian and modern engineered roofscapes



The proposed materials represent what has been found from researching the local environment:

- Pre-weathered steel where rust develops over time and warm burnt tones
- Framed and clad building type (like rural barns) with modern and traditional references
- Material capable of being worked to a crafted level of detail with a robust finish and long life expectancy